

Updating Incorrect LPR Reads



When do we use this?

Some licence plates may not be read properly by the LPR cameras and can be a recurring issue. When a plate is incorrectly read, the patrol officer has the ability to update the plate from the tablet. The corrected record will be stored in the database to be referenced for future reads.

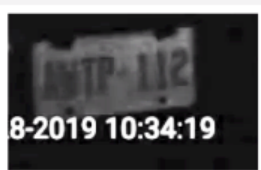
- [Related Pages](#)

On the **OperationsCommander** Android application, tap the LPR Scanning menu item to open the PL8-RDR LPR Scanning window. When patrolling a list of plate reads will appear.

PL8-RDR LPR Scanning

LPR Proxy Connected STATUS

Any Parking Group Any Zone



XWTP112-CANON
74.0



XWTP112

...

ON



XWTP112

Perform an action on this unlisted vehicle

RECENT LPR RESULTS

5

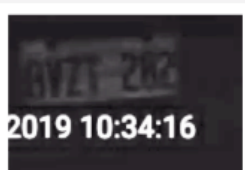
XWTP112-CANON	XWTP112	TT-mobile	74.0
VZ7287-CANON	VZ7287	TT-mobile	67.0
VZ7281-CANON	VZ7281	TT-mobile	66.0
TN7162-CANON	TN7162	TT-mobile	74.0
NOTREAD NK2924	NK2924	TT-mobile	65.0

Find the plate that has been incorrectly read. Enter the fix to the plate, in this case the plate read as VZ7281, but the actual plate was BVZT282. Notice the LPR mode goes into OFF mode when adjusting plate reads.

PL8-RDR LPR Scanning

LPR Proxy Connected STATUS

Any Parking Group Any Zone



VZ7281-CANON
66.0



BVZ7282

... **OFF**



VZ7281

Chalked: 1 mins ago; no location details

- Search only
- Search and Update

RECENT LPR RESULTS

5

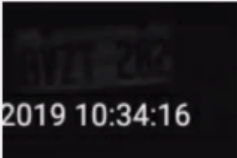
XWTP112-CANON	XWTP112	TT-mobile	74.0
VZ7287-CANON	VZ7287	TT-mobile	67.0
VZ7281-CANON	VZ7281	TT-mobile	66.0
TN7162-CANON	TN7162	TT-mobile	74.0
NOTREAD NK2924	NK2924	TT-mobile	65.0

Select the Search & Update button. Notice the read will change to the updated plate which now includes the missing B.


PL8-RDR LPR Scanning

LPR Proxy Connected STATUS

Any Parking Group Any Zone




VZ7281-CANON
66.0



BVZ7282

...
OFF



BVZ7282

Perform an action on this unlisted vehicle

RECENT LPR RESULTS 5

XWTP112-CANON	XWTP112	TT-mobile	74.0
VZ7287-CANON	VZ7287	TT-mobile	67.0
VZ7281-CANON	VZ7281	TT-mobile	66.0
TN7162-CANON	TN7162	TT-mobile	74.0
NOTREAD NK2924	NK2924	TT-mobile	65.0

In the database the plate has been updated to now reference the updated plate. At this point do not forget to toggle the off button back to ON to continue


patrolling.

75% 10:34 AM


PL8-RDR LPR Scanning

LPR Proxy Connected STATUS

Any Parking Group Any Zone



XWTP112-CANON
74.0



XWTP112 ... **ON**

+ XWTP112
Perform an action on this unlisted vehicle

RECENT LPR RESULTS 5

XWTP112-CANON	XWTP112	TT-mobile	74.0
VZ7287-CANON	VZ7287	TT-mobile	67.0
VZ7281-CANON	VZ7281	TT-mobile	66.0
TN7162-CANON	TN7162	TT-mobile	74.0
NOTREAD NK2924	NK2924	TT-mobile	65.0

Related Pages

- [Adjusting the Read Area](#)
- [Cancel Transaction](#)
- [Configure LPR Camera](#)
- [Improve LPR Read Rates](#)
- [Improving LPR Plate Reads](#)
- [LPR Scanning](#)
- [Performing Permit Rollovers](#)
- [Permit Misuse Notification](#)
- [Permit States](#)
- [Permit Update API](#)
- [PL8RDR Hardware Connections](#)
- [Plate Capture Using Handheld](#)
- [Powering Mobile LPR Camera](#)
- [Temporary Permit Printing](#)
- [User - Payments Tab](#)